


Footing depth and width TBD  
in Windload engineering.

Revision	Approved
X	
DATE:	

Revisions:		
Descriptions	Date	Int
1		
2		
3		



**BULLISTIC BARRIERS**  
1406 W. Kings Hwy, Gap PA 17527  
Phone 717-669-2715

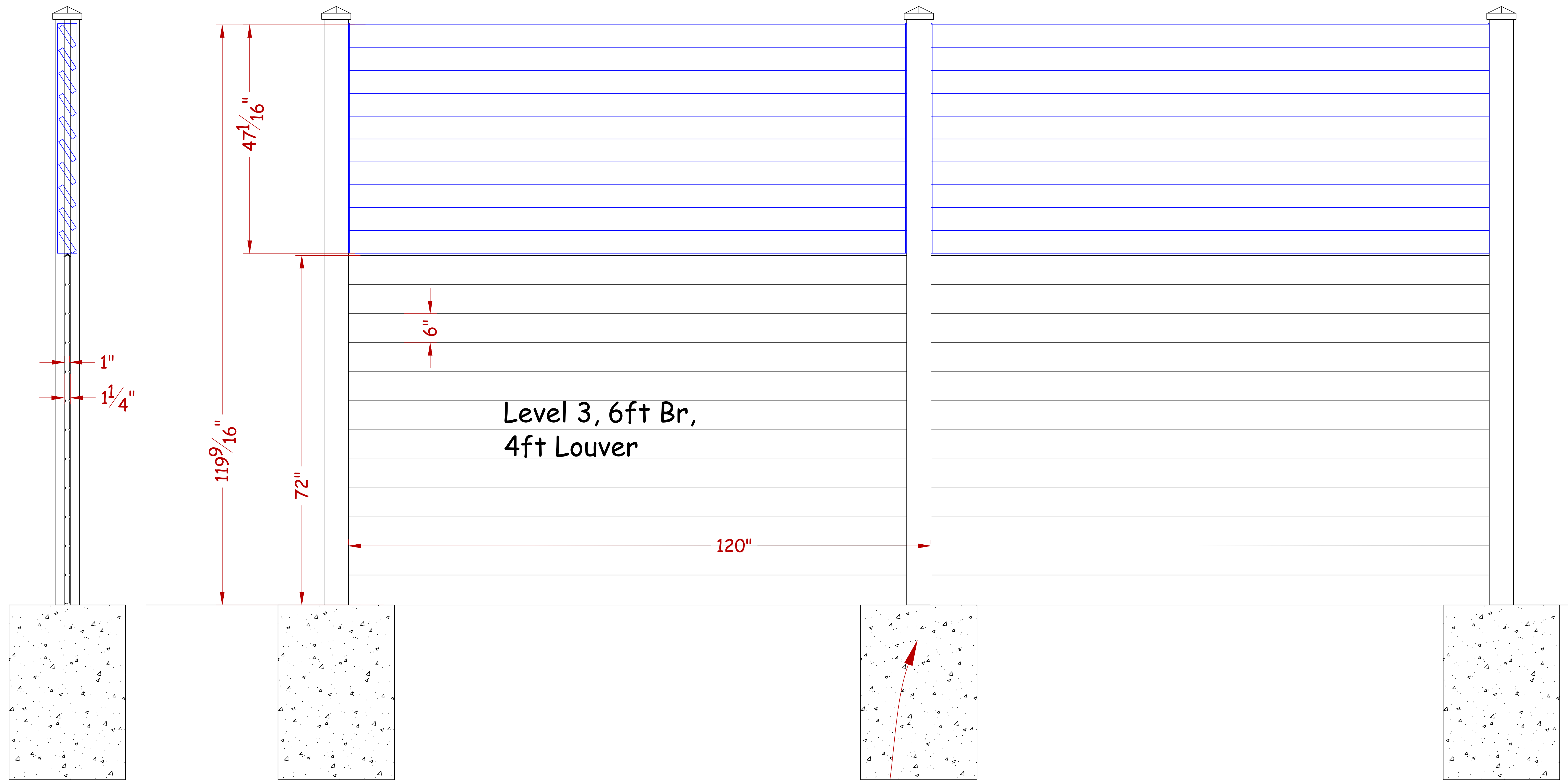
PROJECT: Level 3 Concept Detail

SHEET TITLE: 6ft BR, 2ft Louver      SHEET #: A1

DATE: 4-12-21

SCALE: N/A

Drawn By: GWS



Footing depth and width TBD  
in Windload engineering.

Revisions:		
Descriptions	Date	Int
1		
2		
3		

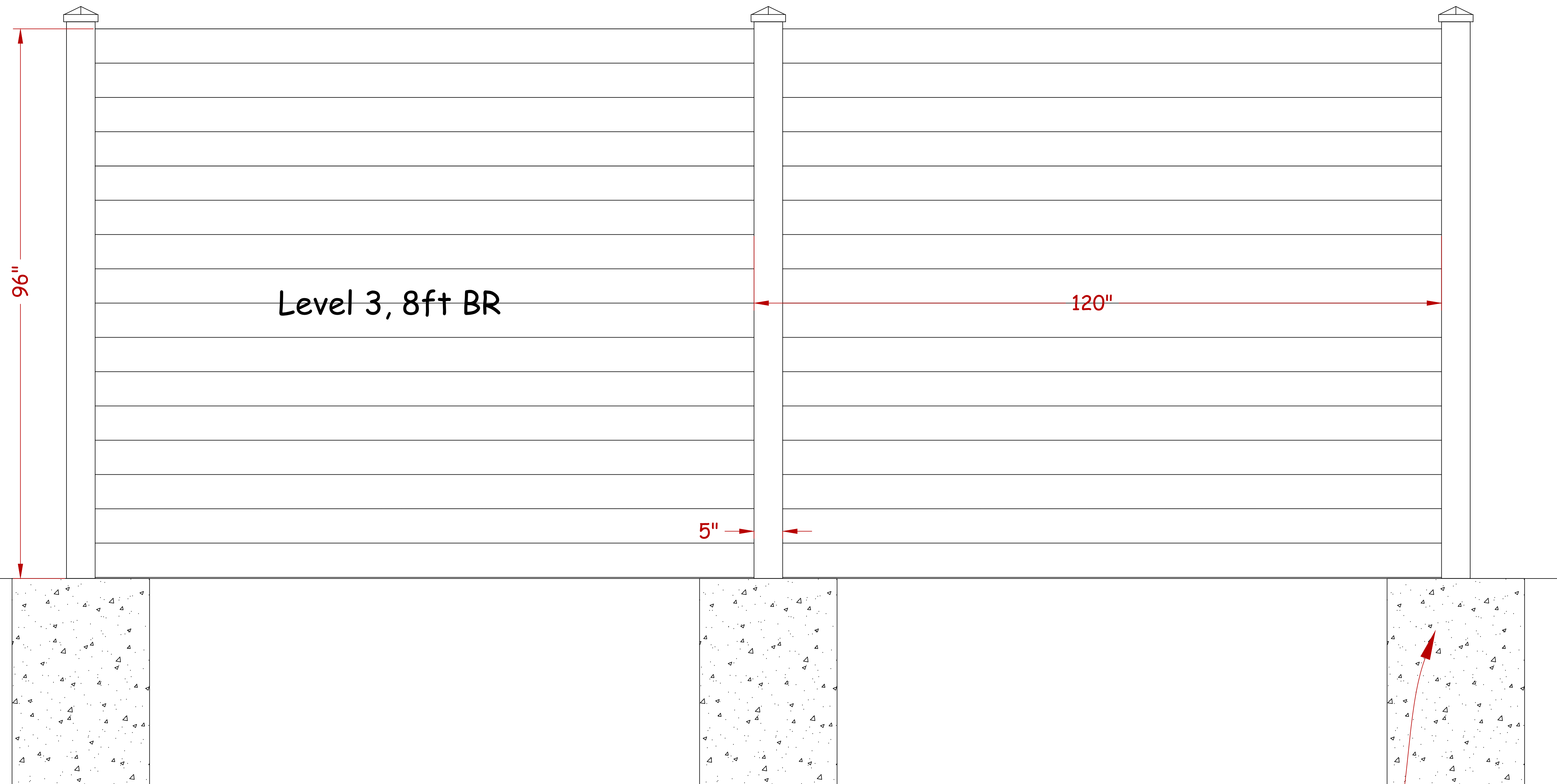
**BULLISTIC BARRIERS**  
 1406 W. Kings Hwy, Gap PA 17527  
 Phone 717-669-2715

PROJECT: Level 3 Concept Detail

SHEET TITLE: 6Ft BR, 4Ft Louver SHEET #1: A2

DATE: 4-12-21  
 SCALE: N/A  
 Drawn By: GWS

Revision	Approved
X	
DATE:	



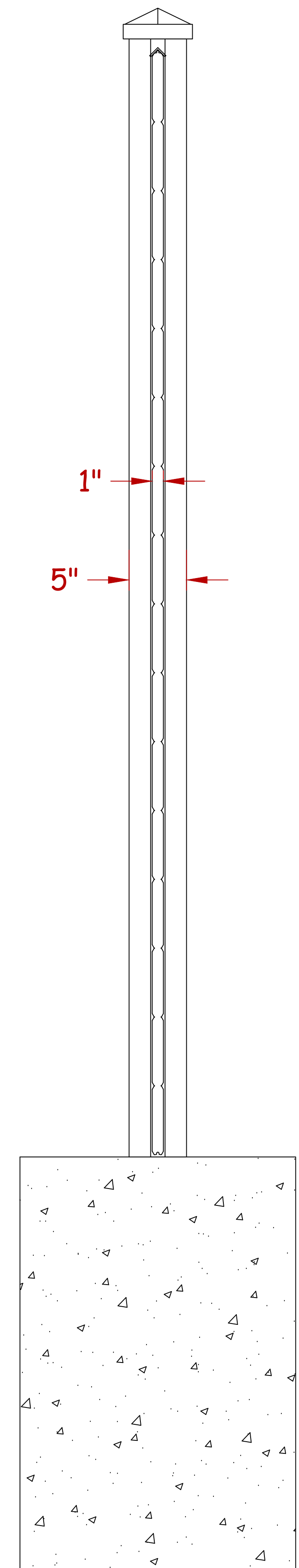
Level 3, 8ft BR

96"

120"

5"

Footing depth and width TBD  
in Windload engineering.



1"

5"

Revision	Approved
X	
DATE:	

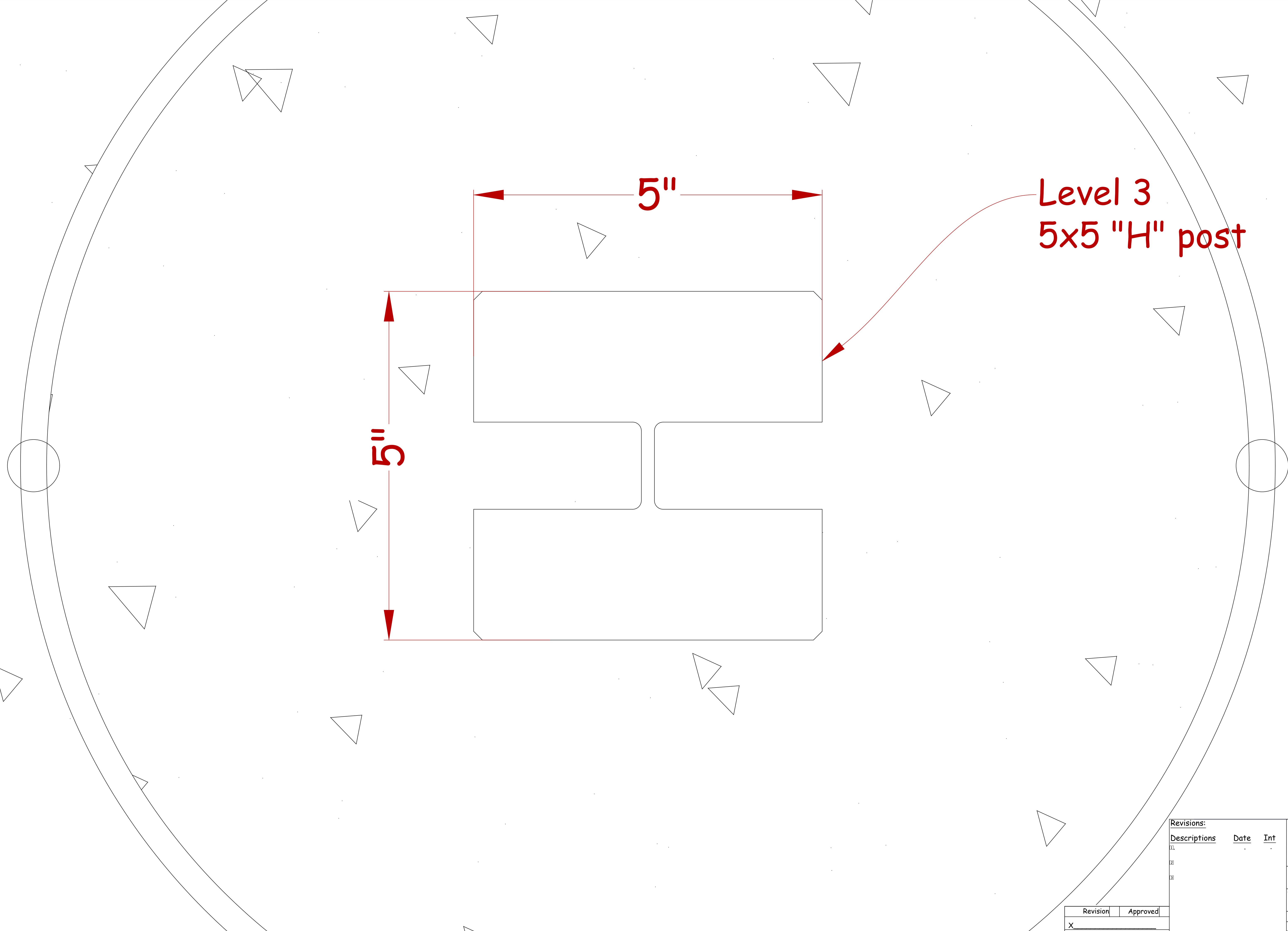
Revisions:		
Descriptions	Date	Int
1)		
2)		
3)		

**BULLISTIC BARRIERS**  
1406 W. Kings Hwy, Gap PA 17527  
Phone 717-669-2755

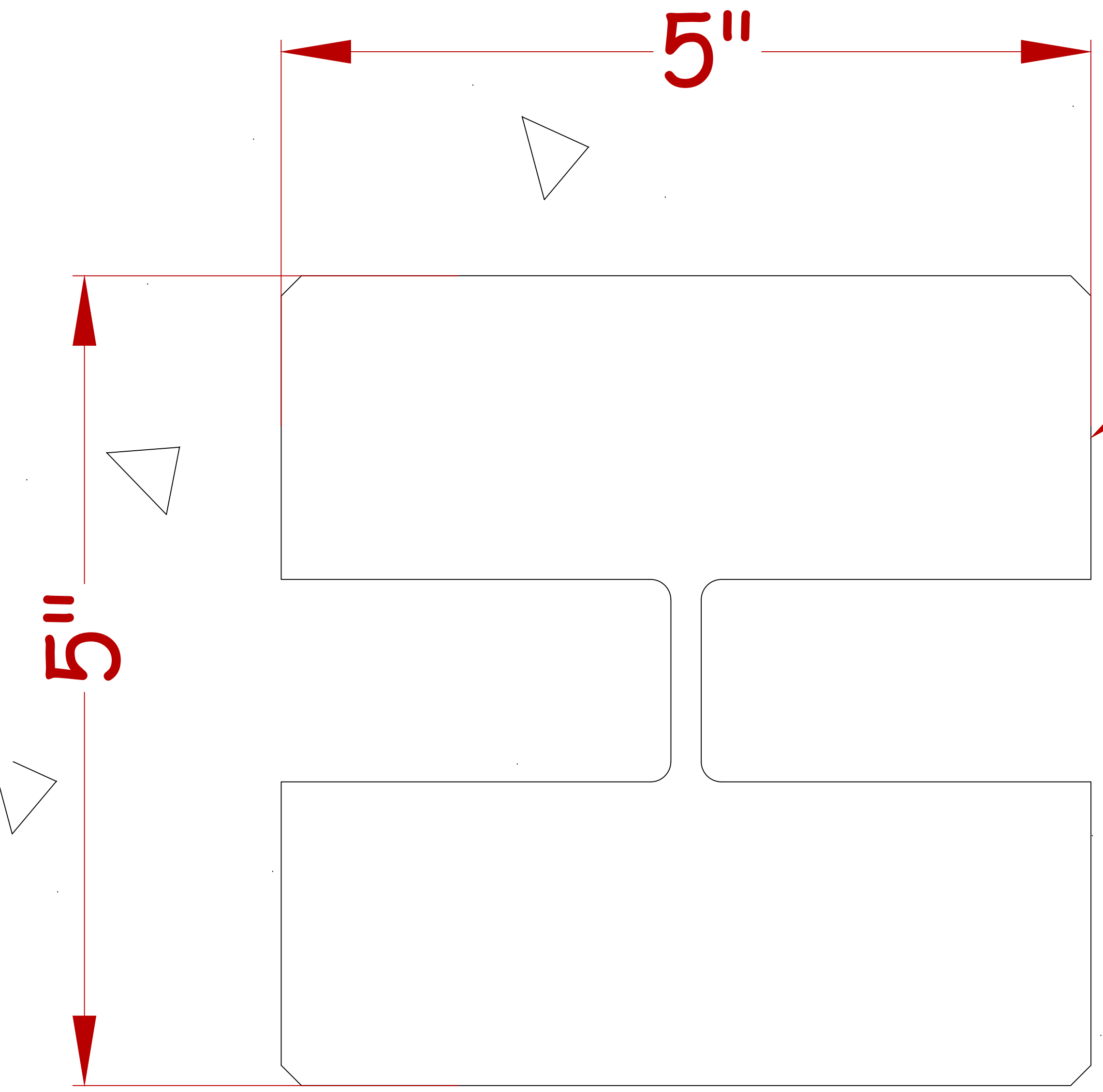
PROJECT: **Level 3 Design Concepts**

SHEET TITLE: **8Ft BR** SHEET #: **A4**

DATE: 6-17-21  
SCALE: N/A  
Drawn By: GWS



Level 3  
5x5 "H" post



Revisions:		BULLISTIC BARRIERS	
Descriptions	Date	Int	1406 W. Kings Hwy, Gap PA 17527 Phone 717-869-2775
1)			
2)			
3)			

PROJECT: Level 3 Concept Detail	
SHEET TITLE: PT-55 Post Detail	SHEET #1: PT-55
DATE: 4-12-21	
SCALE: N/A	
Drawn By: GWS	

Revision	Approved
X	
DATE:	