



# VIOLENTUM GARAGE DOOR



## Violentum Garage Door

An absolute breakthrough in style, safety, and protection! It has been tested to mitigate risks from five different types of threats. Award winning SIA New Product Solutions, ISC West.

- **Bullet Resistant:** It has been tested to provide protection against hand guns and long guns.
- **Forced Entry Resistant:** Rated to withstand forced entry attacks for 60 minutes.
- **Explosion Resistant:** C4 explosions have been used to test these doors capabilities.
- **Crash Resistant:** Tested with a 3100lb truck with a 1600lb payload. Successfully stopping at a P1 result.
- **Hurricane Resistant:** Rated to HVHZ 150 mph winds.

## Innovative

Violentum garage doors combine American engineering, European techniques, and the latest designs. Providing the safest and most cost effective garage door, with ultra security features, available in today's market.

## Lightweight

These garage doors come in at a significant weight reduction of your typical bullet resistant garage door. That means standard heavy duty openers, rollers and hardware can be used, which will significantly reduce costs upfront. Additionally, our lightweight product keeps maintenance and upkeep hassles to a minimum in regards to garage door operators.

## Stylish

Keeping with a classic garage door look these doors are designed to be discrete in their ability to provide safety and protection. With their beautiful and eco-friendly finish, these doors make an awesome modern architectural statement.

## Cost Effective

With a patent pending technique of combining hard and soft materials for structural rigidity and anti-penetration performance, these garage doors come in at a fraction of the cost compared to other ballistic garage doors on the market.







*Door panels tested to 500,000 cycles*

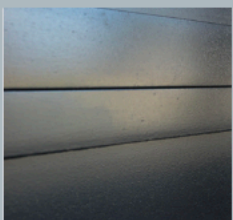
## Ultra-Security Garage Door

Garage doors are an important point of entry into many buildings. Unfortunately, however, it is oftentimes the most easily breached access point in perimeter security.

The Violentum Garage Door by Bullistic Barriers provides a cost-effective solution to limiting vulnerability to homes and businesses with the following attributes:

- 781% stronger than industry standard.
- 150% larger track than typical garage door track.
- 160% better track structure than typical track structure.
- Duty Cycle Tested to levels 3,000% to 4,000% higher than the duty cycle recommendation from the motor manufacturer. This is due to its light weight and translates into greater longevity and dependability on the system.
- 2 electronic locks that sync directly to the garage door opener.
- 500,000 cycles: Violentum garage door panels have been cycle tested far beyond other garage doors.
- 150% larger hinge roller for better performance.
- 5,000% higher cycles than standard industry testing is what our sectional panels have been tested to.
- 667% less cost than other security garage doors on the current market. This means you can have better security, safety, and peace of mind with a lot less cost!

### CHOICE OF 4 BEAUTIFUL COLORS



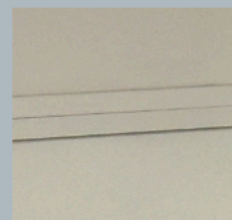
**Ebony**



**Ivory**



**Warm Gray**



**Desert Tan**

CUSTOM COLORS AVAILABLE

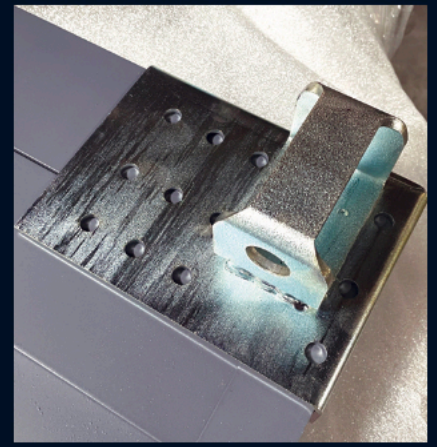
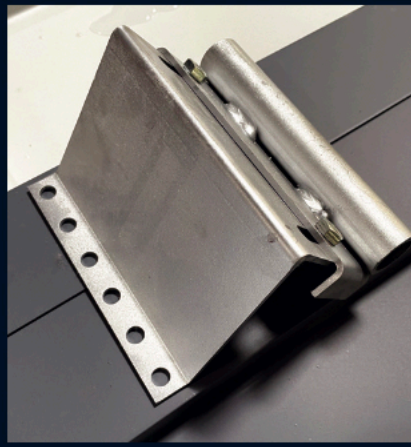
### WOOD LAMINATION & CUSTOM HARDWARE





# Patent Pending Bulli-Hinge 781% Stronger

Our hardware was specifically developed to provide elite protection against multiple threats.



Ultra strength top and bottom brackets

## Complete door package includes:

insulated panels, tracks, standard opener, springs, hinges, brackets, rollers, stems and door trim.

- Roller stems are rated to 781% stronger than the industry standard
- 150% larger track than typical residential garage door
- 160% better track structure support than typical track structure
- Duty cycle tested to levels 3,000 to 4,000% higher than the duty cycle from the motor manufacturer.
- Electronic locks included that synchronize directly with door opener.



Scan here to  
learn more.



SCAN ME

Scan here  
to apply for  
dealer status.



SCAN ME



**BULLISTIC  
BARRIERS** LLC

Providing Dealers and  
Installers Ultra Secure  
Customer Solutions.

Contact us at 717-869-2775 or  
email [office@bullisticbarriers.com](mailto:office@bullisticbarriers.com)

[www.bullisticbarriers.com](http://www.bullisticbarriers.com)



## Safety Features That Are Unparalleled in its Cost Bracket.

**Force Entry Tested:** Safety feature tested to be able to withstand break-ins. It is currently being tested to withstand 60 minutes of Forced Entry testing. This means it will have withstood 240 minutes of brutal bombardment with various tools in an attempt to breach through the edge of door, center of door, between panels, and bottom of door. This garage door provides unparalleled protection so that burglars and thieves cannot simply breach the garage door to invade a home or business.

**Blast Tested:** Blast shock tube testing done by a 3rd party lab ascertained the garage door structure can withstand bombs or explosions up to 12 PSI.

**Ballistic Tested:** These doors are 3rd party tested to provide safety and protection from stray bullets or drive-by shootings for handguns and rifles including 9MM, .357, .44, 12 Ga. Buckshot, 12 Ga. Slug, 30-30 rifle, AR-15 and AK-47. This provides an exceptional level of security at a very affordable cost.

**Hurricane Tested:** Hurricane rated to be able to withstand high winds and debris for areas such as Miami-Dade in Florida. This rating also proves this garage doors' ability to withstand extreme weather conditions.

**Crash Tested:** Tested to SC-30 crash ratings to resist vehicular crash throughs', the Violentum garage door should provide peace of mind for owners of luxury cars, art collections, and car aficionados. This crash rating can make all the difference in a robbery where assailants plan to drive through a simple garage door, load a truck with valuables and disappear. Our garage door has a P1 rating which means the vehicle can penetrate less than 1 meter past the door location.





### **Bullet Resistant:**

Can stop all Level of threats up to UL-752 Level 8, including supplemental 12 ga Buckshot, and 12 ga Slug.



### **Explosion Resistant:**

Has been tested with C4 explosives with pressures up to 20 psi.

### **Crash Resistant:**

Tested with a 3100lb truck with a 1600lb payload. Successfully stopping at a P1 result at 23 mph.



### **Forced Entry Resistant:**

Rated to a 60 minute entry resistant standard.

### **Hurricane Resistant:**

Rated to HVHZ 150 mph winds.





# Violentum Garage Door Threat Capabilities

From panels, hinges, rollers, and posts, to panel interconnections, everything has been considered and tested with outstanding results. There's no other garage door like it in the world — the Violentum Garage door is a legitimate advantage in target hardening and decreasing vulnerability to hate crimes and terrorist attacks and in providing asset protection.

		Violentum III Level 3	Violentum III Level 8	Violentum IV Level 3	Violentum IV Level 8
UL-752 Level 1	9mm 1 shot				
UL-752 Level 2	.357 3 shots				
UL-752 Level 3	.44 3 shots				
UL-752 Level 4	30-06 rifle 1 shot				
UL-752 Level 5	7.62 rifle .308 caliber (AK-47) 1 shot				
UL-752 Level 6	9mm 5 shots				
UL-752 Level 7	5.56 rifle .223 caliber (AR-15) 5 shots				
UL-752 Level 8	7.62 rifle .308 caliber (AK-47) 5 shots				
Forced Entry ASTM F3038*	5 mins.				
Forced Entry ASTM F3038*	15 mins.				
Forced Entry ASTM F3038*	60 mins.				
Explosion Tested to 6 psi* ASTM F2927					
Explosion Tested to 12 psi* ASTM F2927					
Crash rated to SC-30*					
Hurricane rated to HVHZ 150 mph winds					

*\*Pre-tested and pre-rated, all ratings are being verified by a 3rd party.*

## Markets We Serve

We believe there's no better way to provide security and protection for at-risk targets and populations. Properties that can benefit from this groundbreaking ballistic defense/security technology include:

- **Upscale Residential**
- **Government**
- **Data Centers**
- **Daycares**
- **Resorts**
- **Hospitality**
- **Healthcare**
- **Luxury Car Storage**
- **Education**
- **Utility**
- **Energy Infrastructure**
- **Cannabis**
- **Automobile Collectors**

